



Brighton and Hove Camera Club

AN INTRODUCTION

www.bhcc-online.co.uk

Contents

| | | | |
|--------------|---|-------------------|----|
| Welcome | 2 | Exhibitions | 10 |
| Meetings | 3 | BHCC online | 10 |
| Structure | 4 | Workshops/tuition | 11 |
| Management | 7 | Summary | 12 |
| Competitions | 8 | | |

Welcome to Brighton and Hove Camera Club (BHCC)

We are a large but friendly Club that welcomes all photographers, whatever their interests and level of experience. Our aim is to encourage every member to develop his or her full photographic potential through our activities. You'll also find that members are more than happy to offer informal advice and information.

There is a very wide range of photographic interests represented in the Club, including traditional landscape, macro photography, portraiture, street work and experimental digital manipulation.

The Club also has an active social life.

The BHCC was founded in 1891, and has long had a reputation as one of the best photographic clubs in the UK.



To quote from our website (www.bhcc-online.org):

The BHCC is a thriving photographic society with over 150 members of all ages and from all walks of life, interested in all aspects of photography – from film to digital, from traditional landscapes to contemporary images. Members’ photographs have been exhibited nationally and internationally. Our aim is to help photographers improve their image-making, both in terms of art and technique.

Meetings

The BHCC meets on Tuesday evenings (7.30–9.45 pm) between September and May (the Club’s season: the ‘winter’ programme).

Tuesday meetings are held at

Main Hall, Methodist Church
Portland Road
Hove BN3 5DR

In addition, there are a number of extra sessions on Thursdays (see the 'Entry Group' and 'Workshops and tuition' sections, below) at

English Language Centre
33 Palmeira Mansions
Salisbury Road
Hove BN3 2GB

The BHCC's Winter season finishes in May. However, the Club arranges a summer programme that includes photographic excursions, visits to exhibitions, etc. Members also meet regularly at a pub in Hove on Tuesday evenings.

Details of events and meetings are listed in our programme and on our website.

Structure

The Club is divided into two groups:

- B (or Entry) Group
- A Group

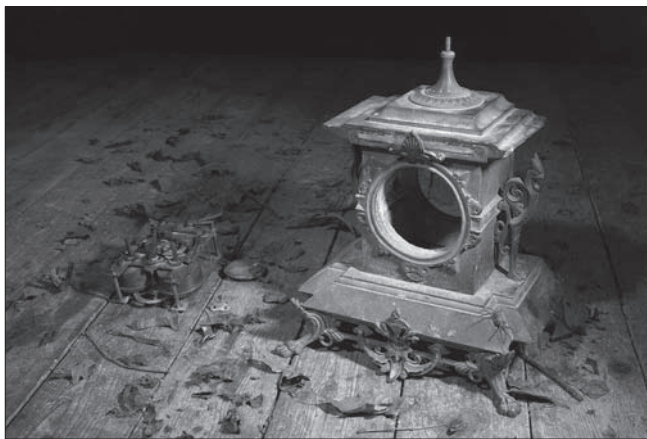
New members, regardless of their photographic skills, are advised to join the Entry Group (described below).

Members enter the A Group when they are familiar with how the Club operates and their photographic ability has reached a good standard.

The Entry Group. Six of the Thursday sessions at the English Language Centre are aimed specifically at new members. These help you to develop your photographic skills, become familiar with the Club and meet and get to know other members – many of whom will be new to the Club like yourself.

New members are also encouraged to attend all Tuesday meetings, regardless of whether there is a Thursday Entry Group meeting that week.

The Entry Group has members with widely different levels of photographic ability, from beginners



through to people with a lot of experience but who do not want to move to the A Group. For many new members, the Entry Group will be their first opportunity of being able to comment on others' work and having their own work discussed. These sessions are friendly and supportive.

The sessions are a mixture of informal discussion of member's images, some workshops aimed at improving print composition and display, and also some print competitions. In all of these sessions we actively encourage everyone to participate and share views – but you don't have to show your photographs until you feel ready to do so.

Prints displayed in the A Group competitions are usually mounted, but this is not essential for the Entry Group competitions; however, it helps if you can attach them to some stiff card so they will stand up on our easel system.

The Entry Group is run by Audrey Marshall and Jean Gerrard. Other experienced Club members attend Entry Group meetings to provide support, advice and information.

Many Club members remember their time in the Entry Group with fondness. As one long-time member says:

'I really enjoyed my time in the group – I probably learned more about photography, that is, what makes a good picture and how to develop my own

ideas about what I want to do, than at any other time. I also made some good friends.'

We encourage you to stay in the Entry Group for at least your first season. However, you can promote yourself to the A Group at any time: if you wish to do so, we suggest you wait until Christmas, and also ask that you discuss this with one of the Entry Group organisers or another senior Club member. Those who do well in the Entry Group competitions are automatically promoted to the A Group, but this is not compulsory – some members prefer to remain in the Entry Group, and are welcome to do so.

Management

The BHCC is managed by an elected Committee comprising principally of:

- President
- Vice President
- Treasurer
- Secretary
- 3 additional members

The names and photos of Club officials are in the Members' area of the Club's website.

There is an annual general meeting at the end of the season, where officials can be re-elected or new ones voted in. All this is explained in the Club's constitution, which is on the Club's website.

Competitions

Competitions are an important and popular part of our programme. They give members an opportunity to show their work, have it commented on and gain insights into how their photography might be improved and developed. Points are awarded considering both the technical quality and artistic merit of a photograph, and each entry is critiqued in isolation, without comparison to other photographs in the competition.

We organise several print competitions, where prints are assessed by experienced commentators, either our own Club members or invited experts.



Jumping at Newhaven | David Miles ARPS

The majority of the competitions are ‘general’: photographs of anything can be submitted. However, a few are ‘speciality’ competitions: the print is judged on adherence to the subject as well as on the usual creative and technical criteria.

There are also projected-image competitions, where images are uploaded via the Club’s website and are shown projected onto a large screen for assessment.

As mentioned earlier, the Entry Group sometimes holds its own competitions on Thursday evenings.

Competition rules and instructions are on the Club’s website (www.bhcc-online.org/members.html). Rules do change, so do check the current rules on the website or ask another Club member.

At the time of writing (June 2011), there are:

- 5 general print competitions
- 2 speciality print competitions
- 6 general projected-image competitions
- 1 speciality projected-image competition.

All members (both A and Entry Groups) can enter all the competitions.

We also encourage members to enter external competitions/exhibitions, including:

- The London Salon: Annual Exhibition
- The Royal Photographic Society: International Print Exhibition, International Projected Image Exhibition

- The Southampton Camera Club: International Exhibition of Photography
- The Surrey Photographic Association: SPA Exhibition

Exhibitions

Despite exhibition space in Brighton and Hove being at a premium, we organise regular public exhibitions of our work. Generally, all Club members are invited to submit work for selection.

We are always on the look out for reasonably priced gallery space in or around Brighton, so please let us know if you are aware of somewhere. Currently, we are very fortunate to have an association with the Café Koba in Western Road, Brighton (next door to Waitrose). The venue allows us to hang our work on its walls, which we change every three months.

BHCC online

The website The Club has a comprehensive and well-designed website at www.bhcc-online.org full of news and information. It is well worth browsing!

Sections include:

- News – for members and the public
- Information – about the Club, including its history
- Diary – the programme and other events
- Members' area – competition pages (the rules,

upload projected-image entries), downloads, photos of Club officials, and how to join the Club's online gallery, forum, and Flickr and Facebook groups

The gallery All Club members are entitled to a personal online gallery that allows them to easily upload and organise their photographs. To apply, click on the link in the Members' area of the website.

The forum The Club has an online forum where members can keep in touch, ask for advice, and sell and buy equipment. To join, click on the link in the Members' area of the website.

Flickr and Facebook The Club also has a lively Flickr group (www.flickr.com/groups/bhcc_on_flickr) and a Facebook group (www.facebook.com/group.php?gid=137580519589726).

Workshops and tuition

The Club holds workshops on Thursday evenings that alternate with New Members' evenings. These are open to all members.

The workshops cover a range of subjects, such as:

- Getting to know your camera
- How to mount prints
- Macro photography
- Studio photography
- Image workflow (from camera to print)

Also on Thursdays are Distinction workshops, for those members who wish to apply for qualifications from the Royal Photographic Society (RPS). The RPS awards three Distinctions (in increasing order of merit):

- Licentiate (LRPS)
- Associateship (ARPS)
- Fellowship (FRPS)

The Club strongly promotes these qualifications as a means of improving your photography.

All Distinctions are obtained by submitting a panel of images for assessment by the RPS, and the workshops aim at providing advice on how to put together a successful panel. We are privileged in having three qualified RPS judges who provide invaluable guidance at these workshops.

You can find out more about the RPS Distinctions at www.rps.org/distinctions-introduction.

Summary

This booklet has attempted to give you an overall impression of the BHCC and what it does. The best advice is to join, come along regularly, talk to members and get involved in the Club (there are many voluntary tasks that can be undertaken to help in the smooth running of the Club).